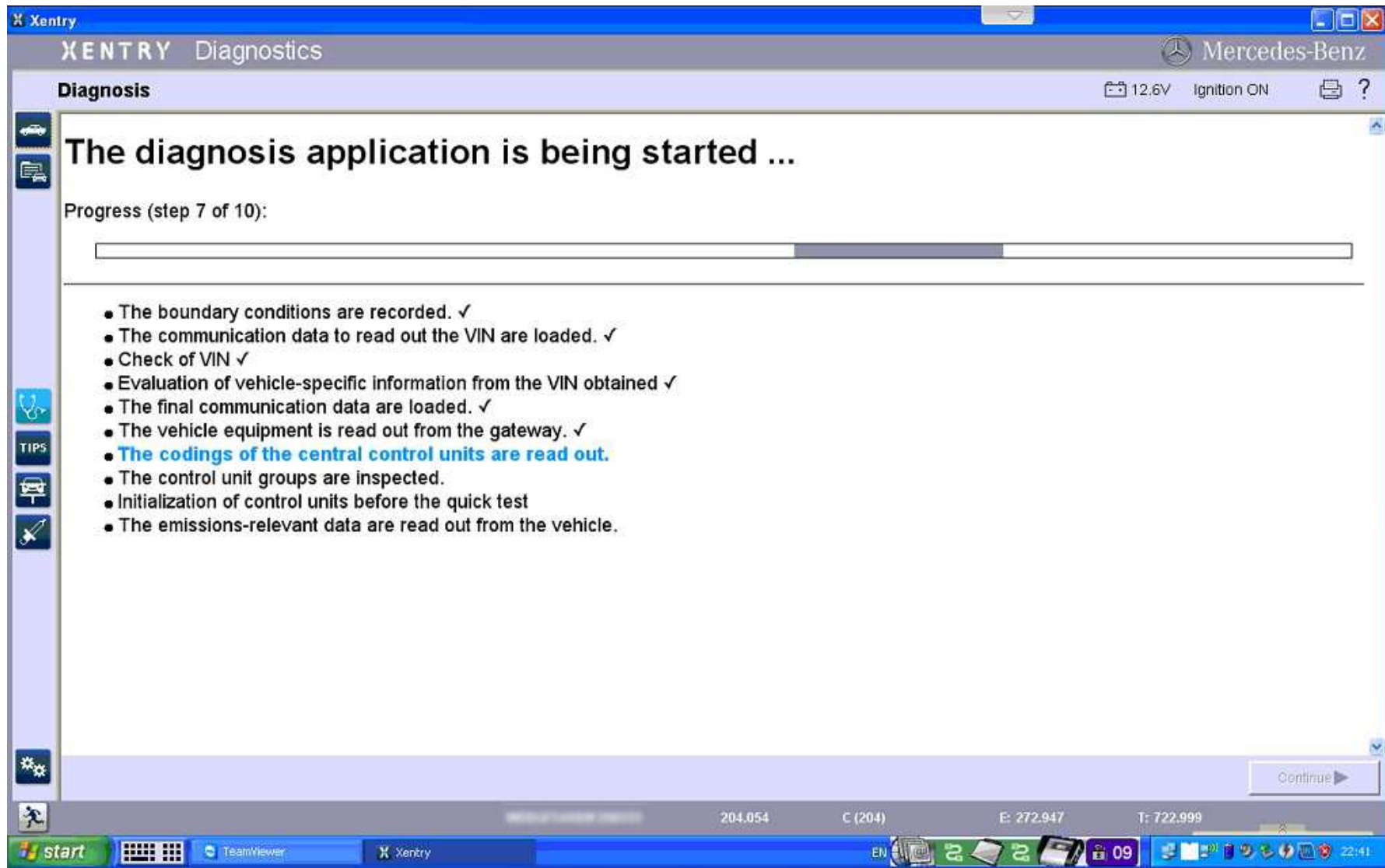




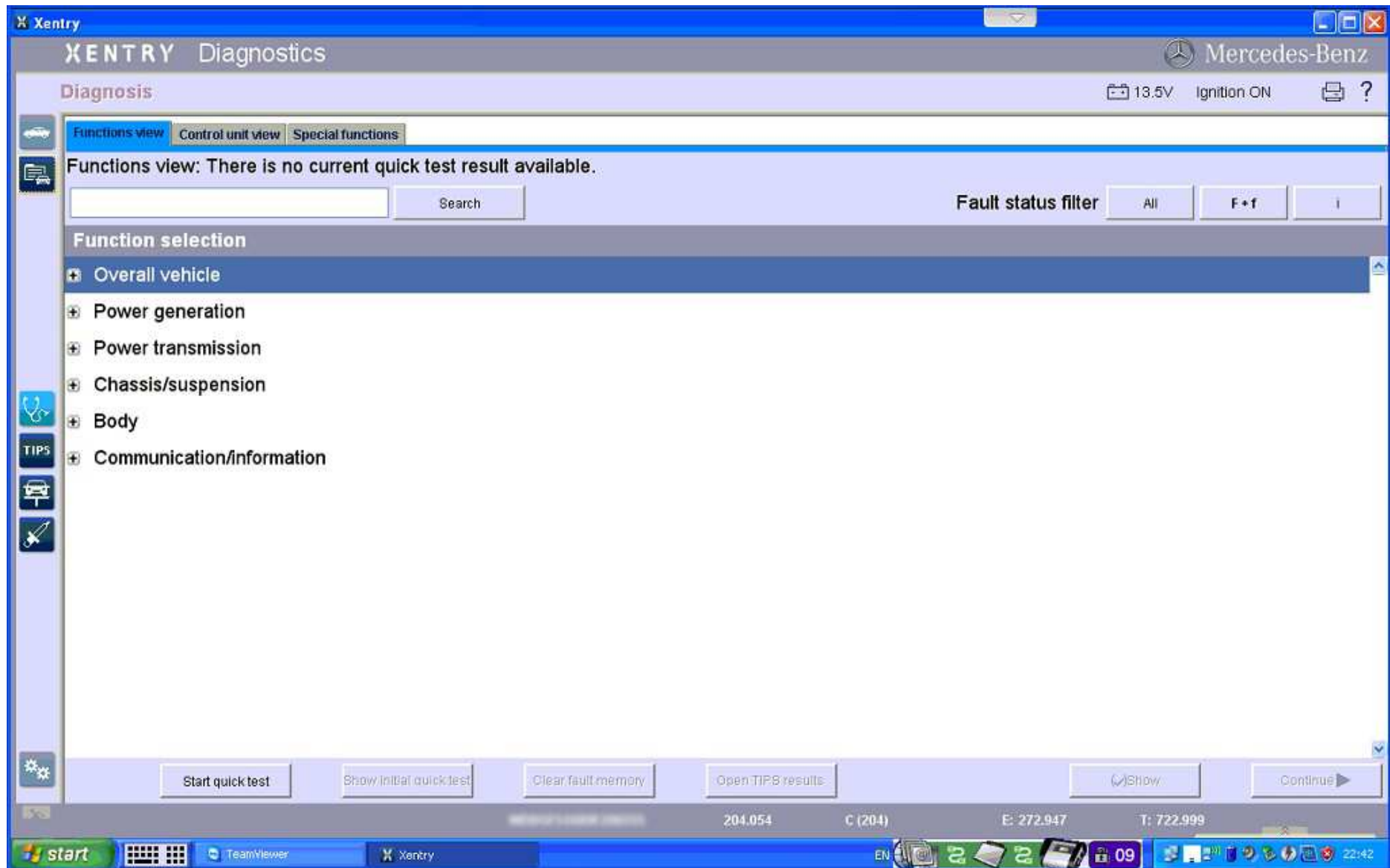
A: OBDII 16Pin B: USB Cable C: Express To RS232 Card D: Multiplexer E: RS232 To RS485 Cable
 F: Verification Letter G: 14Pin Cable H: 38Pin Cable I: Driver for Express J: Driver for PCMCIA
 K: PCMCIA To RS232 Card L: USB Key M: 4Pin Cable N: Mobile HDD (Normal Version)

To protect your rights, please buy Official Authorized Tools!

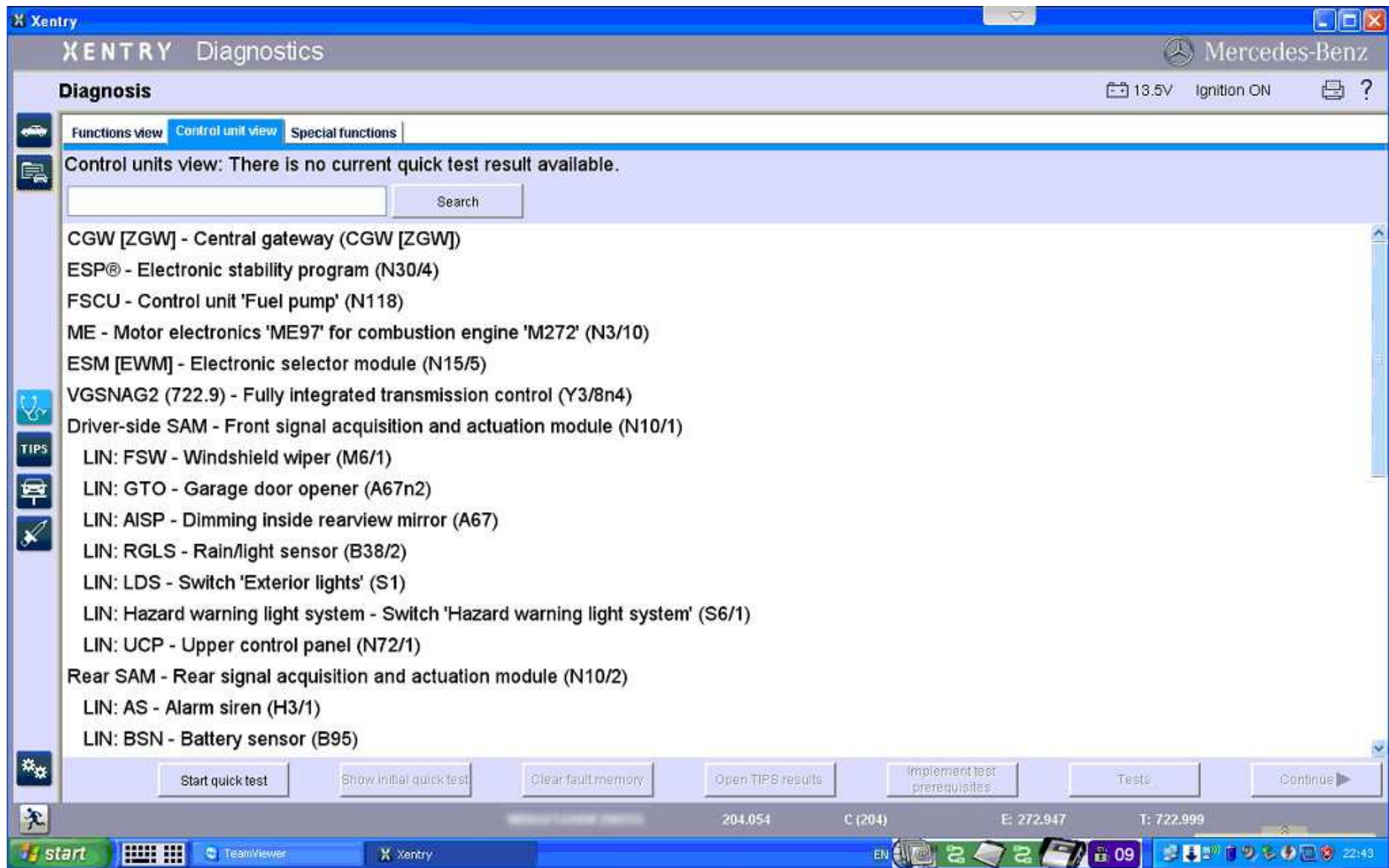
SUPER MB STAR **ONLINE SCN** CODING DEMO



(Enter the Xentry software and it will read the vehicle information automatic)



(You can see the details functions and modules inside Xentry software)



(Control modules are able to be read out in the Control unit view menu)

Xentry

XENTRY Diagnostics

Mercedes-Benz

Diagnosis > Control unit

13.5V Ignition ON

ME - Motor electronics 'ME97' for combustion engine 'M272' (N3/10)

Version | Error codes / Events | Actual values | Actuators | Adaptations | Information | Control unit log | Special procedures | Tests | Gesamtliste_Pruefungen_zum_Testen

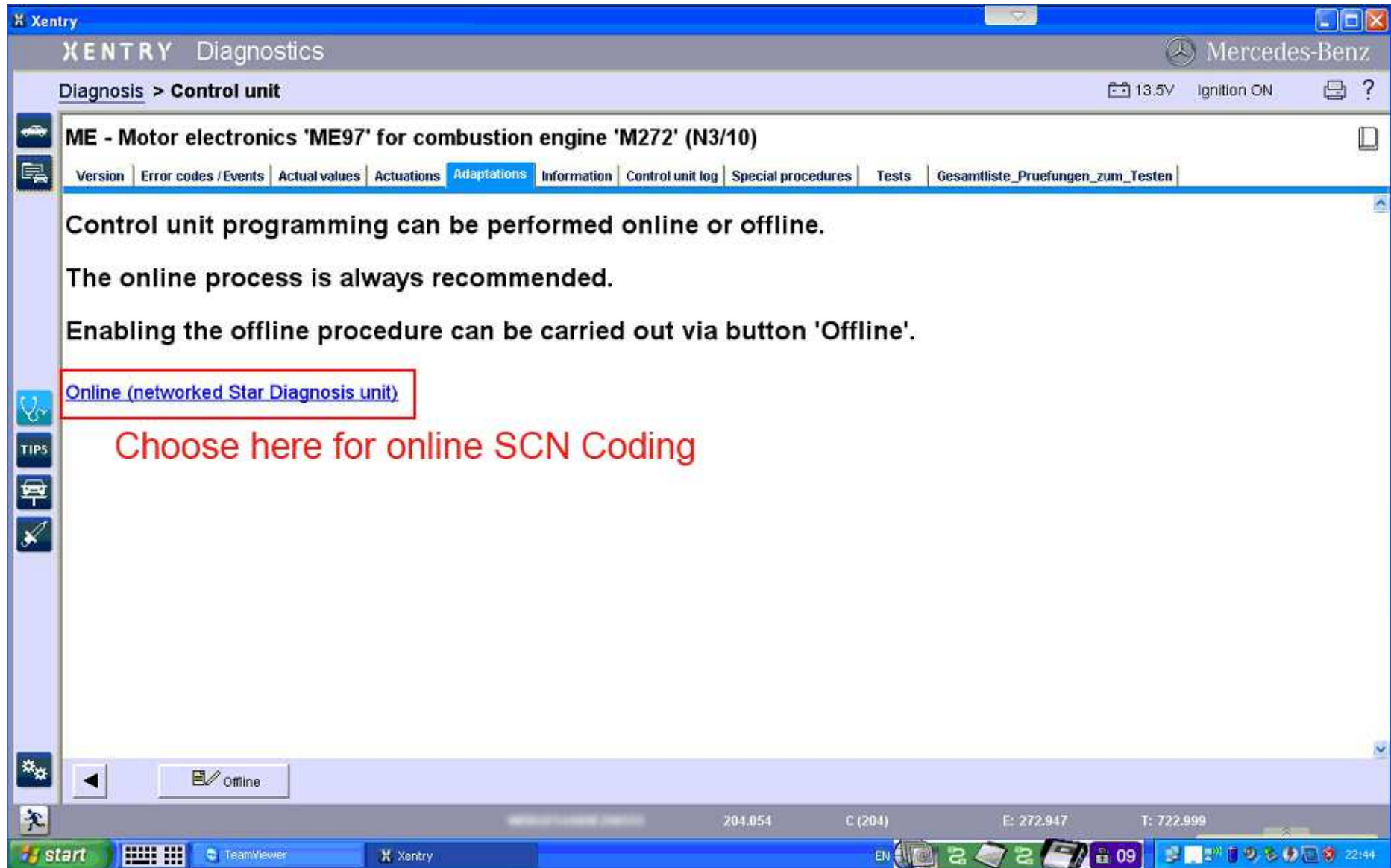
ME - Motor electronics 'ME97' for combustion engine 'M272' (N3/10)

MB object number for hardware	003 446 77 40
Diagnosis identifier	8/21
Supplier	Bosch
Control unit variant	M272_KE_VC13_2
MB object number for software (code)	007 448 90 40
MB object number for software (data)	004 447 82 40
Data status	6f13110ns0000
Multiplexer serial number	00 91 02 56

204.054 C (204) E: 272.947 T: 722.999

start TeamViewer Xentry EN 09 22:44

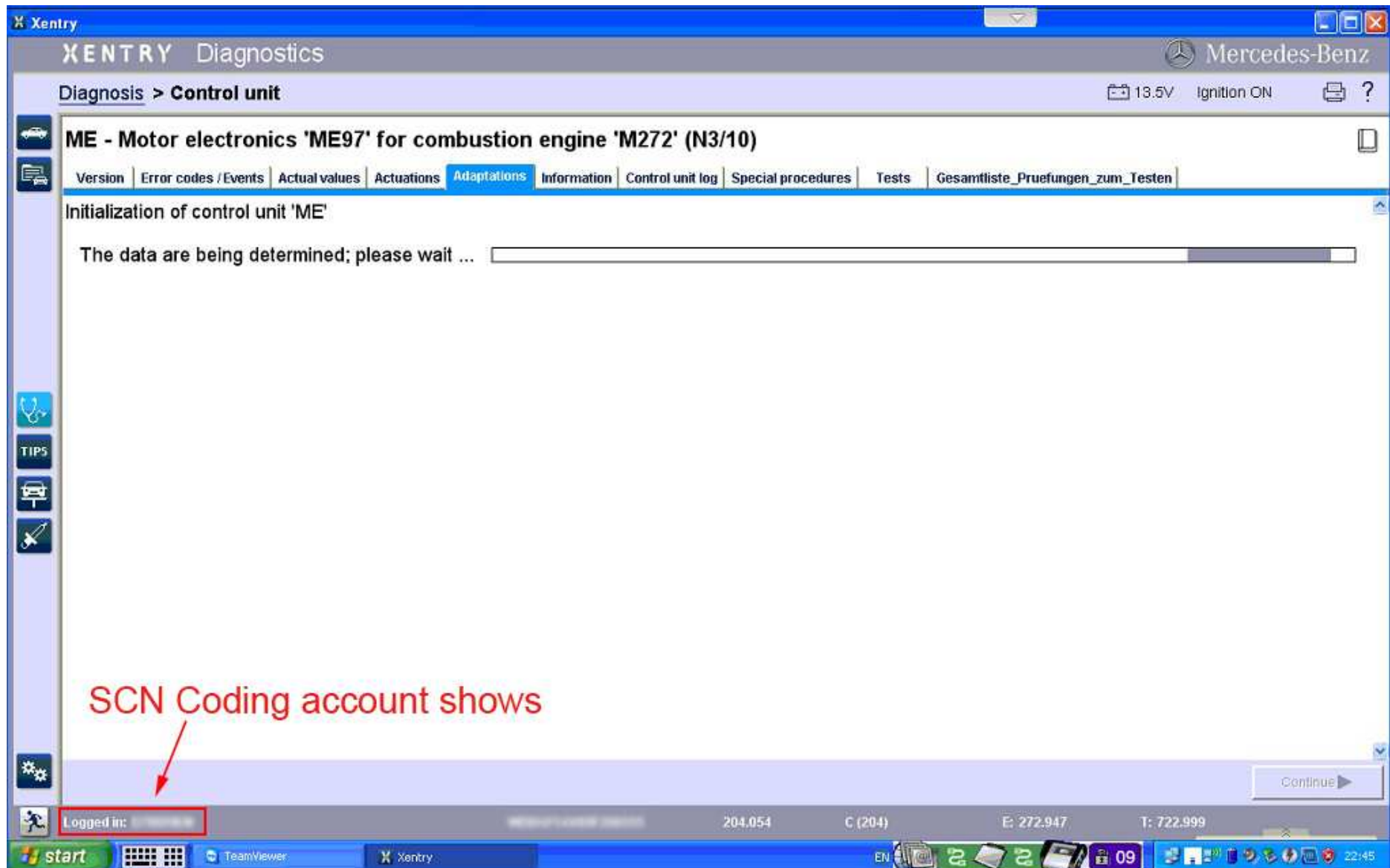
(You can read out the details ECU info by clicking the version menu)



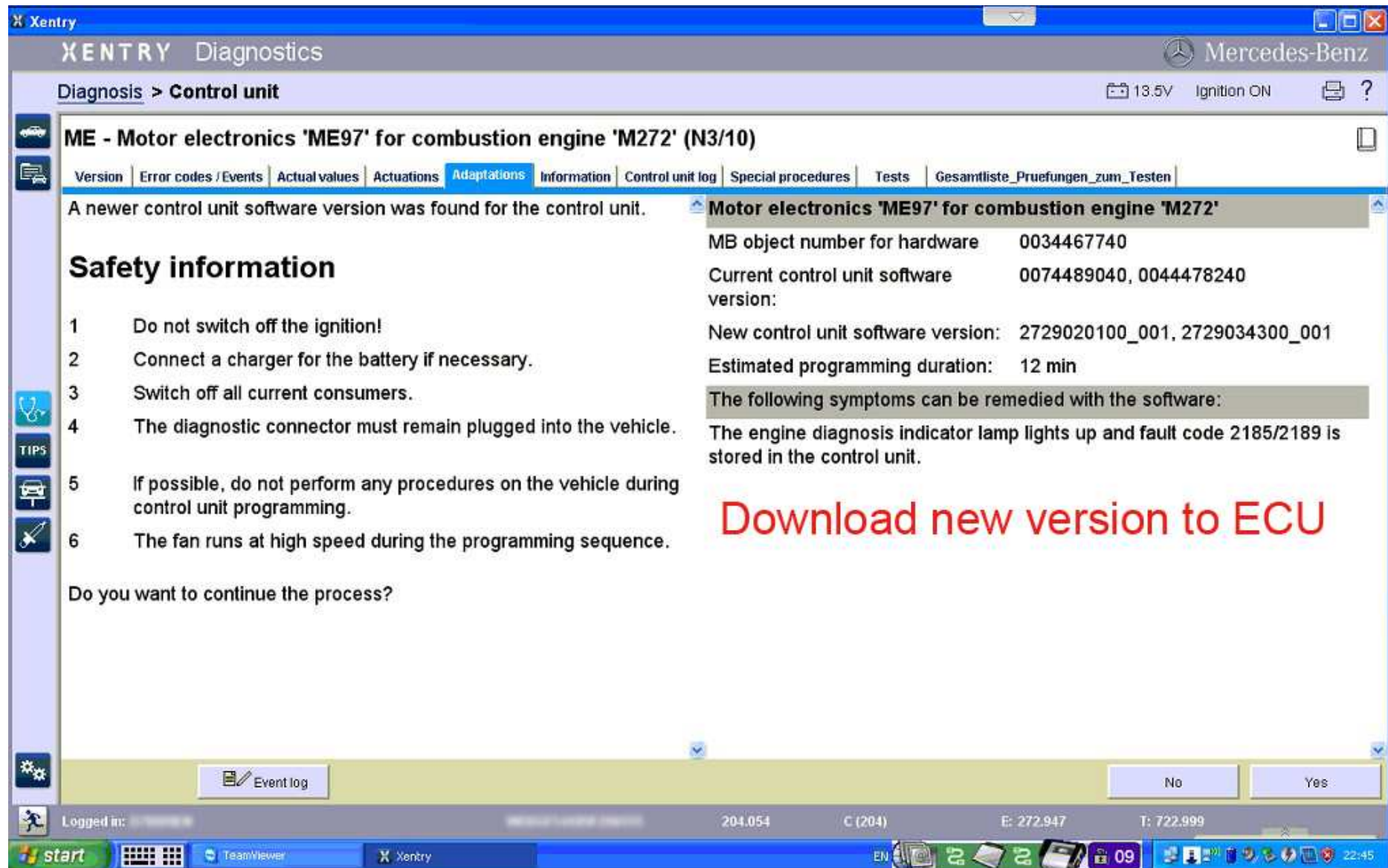
(Choose Adaptations if you want Coding/Programming the ECU)



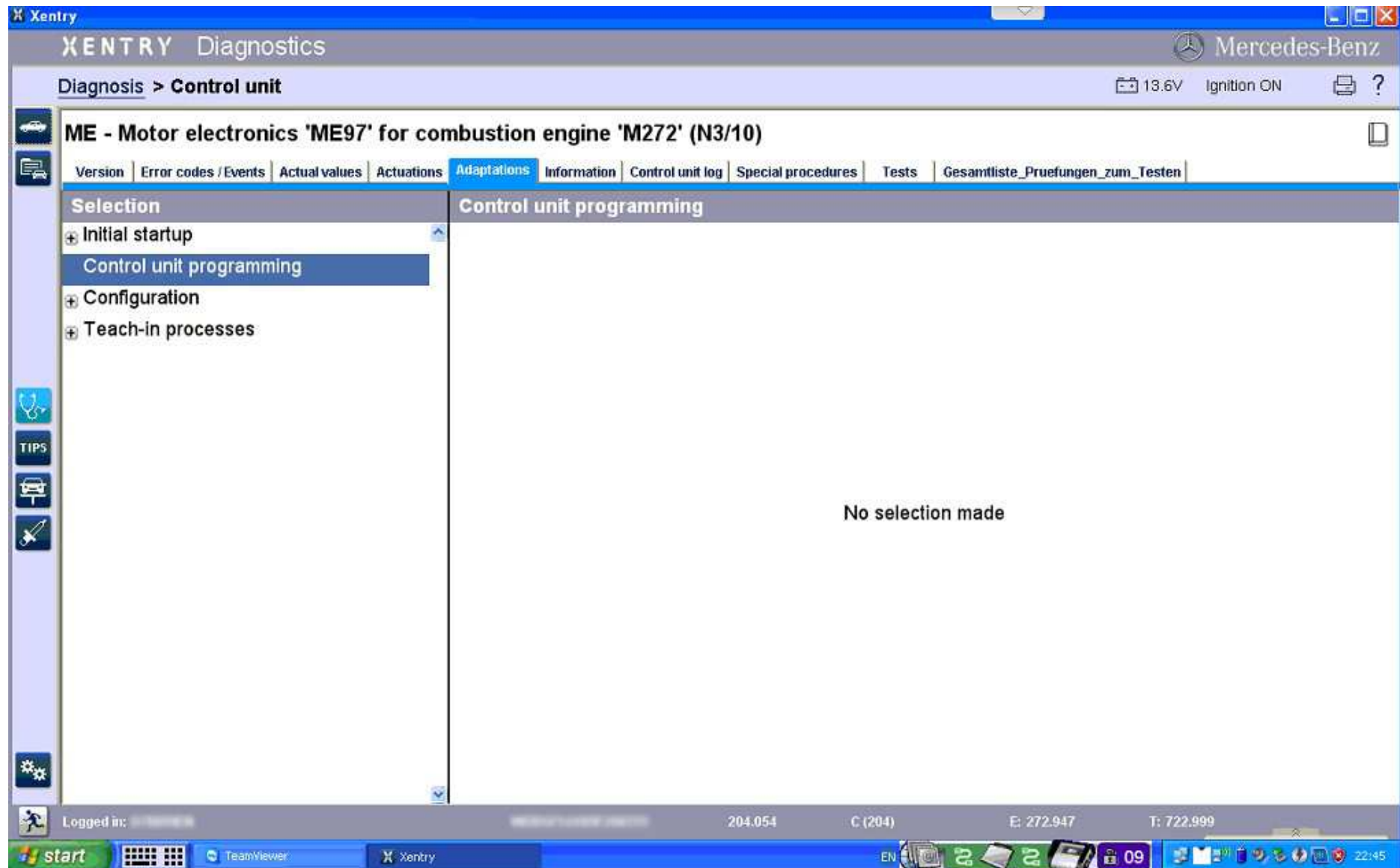
(Here input the user name and password to log on to Mercedes-Benz Serve)



(After login the serve, you can see the user account will be shown and system will coding ECU automatic)



(Download new data to ECU and press yes to confirm)



(Go to confirm the information again)

Xentry

XENTRY Diagnostics

Mercedes-Benz

Diagnosis > Control unit

13.6V Ignition ON

ME - Motor electronics 'ME97' for combustion engine 'M272' (N3/10)

Version | Error codes / Events | Actual values | Actuators | Adaptations | Information | Control unit log | Special procedures | Tests | Gesamtliste_Pruefungen_zum_Testen

ME - Motor electronics 'ME97' for combustion engine 'M272' (N3/10)

MB object number for hardware	003 446 77 40
Diagnosis identifier	8/21
Supplier	Bosch
Control unit variant	M272_KE_VC13_2
MB object number for software (code)	007 448 90 40
MB object number for software (data)	004 447 82 40
Data status	6f13110ns0000
Multiplexer serial number	00 91 02 56

Finsh! Enjoy

By Super MB STAR NET

Logged in: 204.054 C (204) E: 272.947 T: 722.999

start TeamViewer Xentry EN 09 22:46

(The END!)